

General Motion Control

A complete range of motion products for
efficient machine automation

Catalog

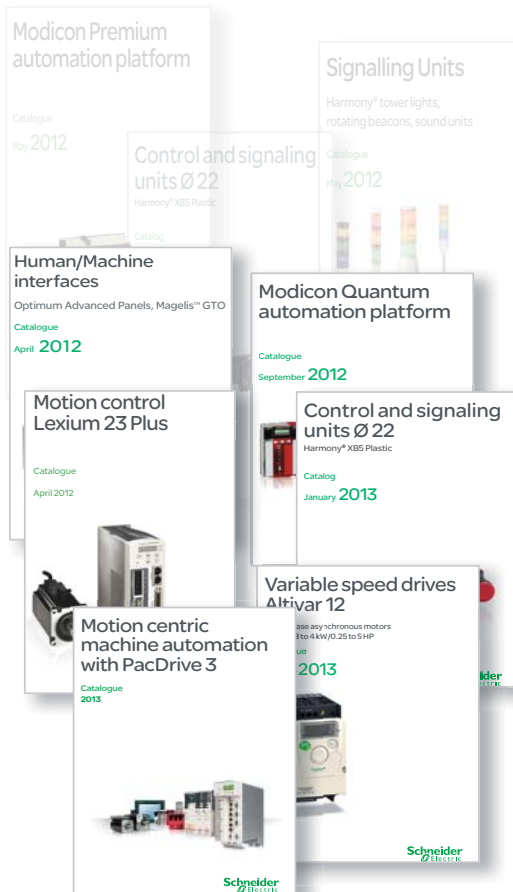
2013



How to find the “Automation and Control” products

> Catalogues

Complete product ranges



> Essential guides

Selection of the top selling products



General contents

General presentation.....	1
Selection guide.....	2
Servo drives and motors.....	3
Integrated drives.....	4
Linear Motion.....	5

1



- > A complete product range
- > solution competency
- > the power of motion
- > connectivity
- > global availability

make Schneider Electric your partner of choice for cost-effective and energy-efficient machine automation

Schneider Electric, you can rely on us!

Maximum productivity for your machines

Complete Motion offer

- > Complete and scalable motion range with outstanding servo control loops for virtually all kinds of machines
- > Wide range of linear motion and robotic products and capacity for customization and 3rd party motors

Simplicity

- > Our motion products are designed for maximum simplicity over the entire machine lifecycle to reduce costs and make your machine processes even more productive
- > Our motion products are easy to integrate into your machine environments through standard software tools, motion libraries and application function blocks

Openness

- > Our products support standardized motion interfaces: CANopen, CANmotion, Profibus, DeviceNet, Ethernet IP, EtherCAT, Ethernet Powerlink, Modbus TCP and Pulse Train
- > This allows you to efficiently design machines which can easily be integrated into your customers' automation architectures

Safety

- > Safe Torque Off (STO) embedded in the drives
- > Advanced safety functions: Safe Stop (SS1, SS2), Safety Limited Speed (SLS), Safe Operating Stop (SOS) as option available

With superior performance in the market and embedded safety, our wide range of motion products supports standardized motion interfaces to assist integration.

If you need even more performance, our PacDrive offer is your product of choice. With its centralized system architecture, PacDrive is the ideal solution for controlling a broad range of servo-driven production and packaging machines, as well as material handling equipment.



from coordinated ... to synchronized motion control

Whatever your performance needs are, our high-performance drives and motors offer a range of choices

If you need coordinated or synchronized motion control, Schneider Electric offers a wide range of servo drives and integrated drives for machine automation. With a power range up to 25 kW there is the right drive for your application.

Lexium 52/62

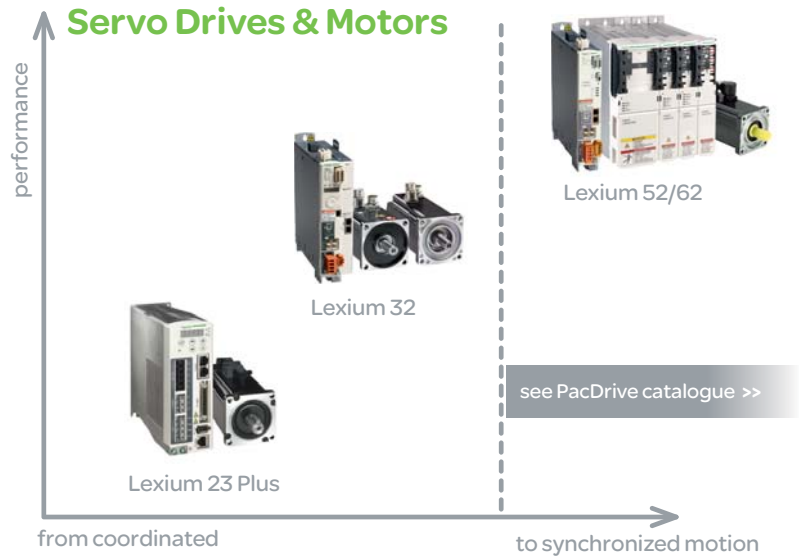
- > High-Performance servo drive
- > Single (LXM52) and multi axis (LXM62)
- > Safety on Sercos
- > 0.4 kW to 25 kW

Lexium 32

- > Flexible servo drive
- > Powerful control loop
- > Embedded safety
- > 0.15 kW to 7 kW

Lexium 23 Plus

- > Optimized servo drive
- > Small form factor
- > 0.1 kW to 7.5 kW



Lexium ILM62

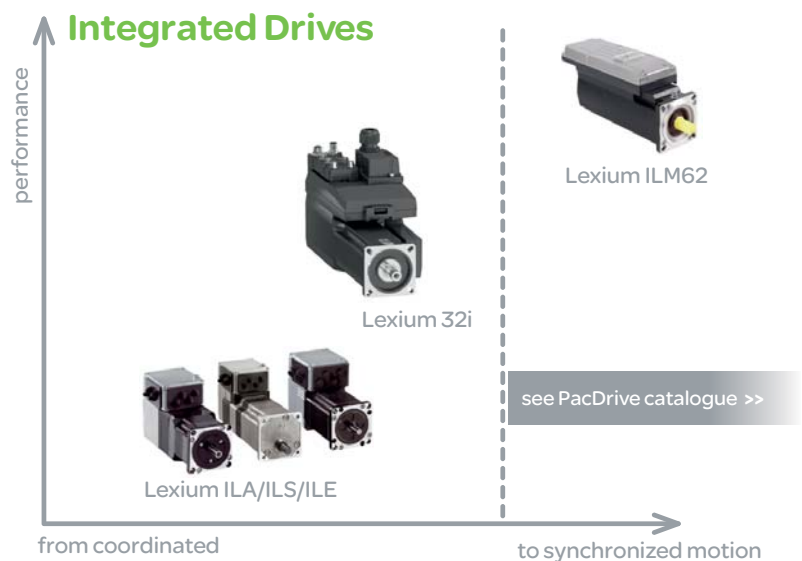
- > Single cable solution
- > Sercos interface
- > Safety on Sercos
- > 0.3 kW to 2 kW

Lexium 32i

- > Modular servo drive
- > CANmotion interfaces
- > Embedded safety
- > 0.6 kW to 2.2 kW

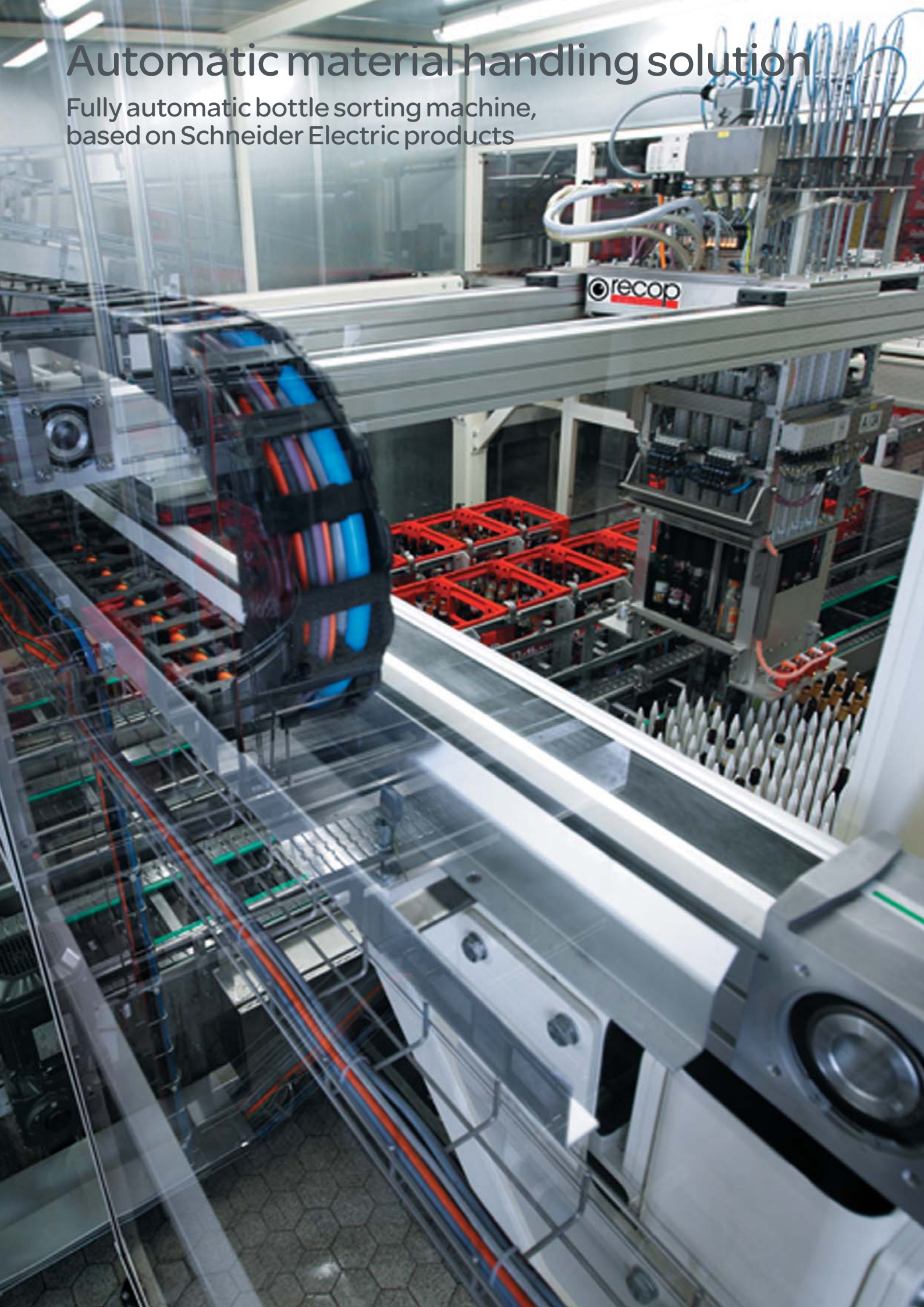
Lexium ILA/ILS/ILE

- > Extremely compact drive
- > Servo, stepper and brushless
- > Large choice of interfaces
- > 0.1 kW to 0.4 kW



Automatic material handling solution

Fully automatic bottle sorting machine,
based on Schneider Electric products



MachineStruxure™



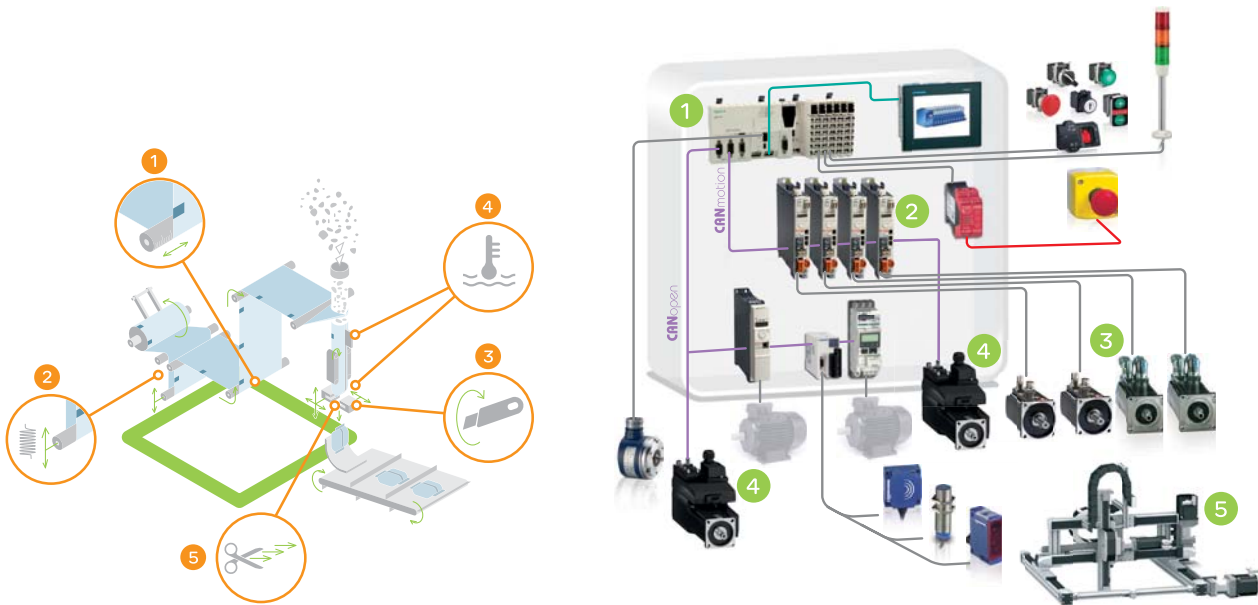
- > Predetermined equipment lists
- > **Tested:** in various possible configurations for proper function relative to performance
- > **Validated:** functional compatibility of devices
- > **Documented:** a complete system user guide, predefined CAD panel design and wiring diagrams

Reduce your machine's time-to-market with Tested, Validated and Documented Architectures and function blocks

The choice of automation solutions is now, more than ever, a determining factor in supplying machines with shorter lead times that are more efficient, productive and reliable, at a reduced cost.

To meet this demand, Schneider Electric offers MachineStruxure™ automation solutions, which help machine builders to quickly design machines that are optimized with regard to costs and energy efficiency, whilst maximizing their performance throughout the service life of the machine. MachineStruxure™ solutions propose Tested, Validated and Documented Architectures with standard or application function block libraries.

> Machine solution



Application functions

- 1 Grouping/Ungrouping
- 2 Lateral position control
- 3 Digital tension control
Analog 1m tension control
- 4 Rotary knives
- 5 Heating temperature control
- 6 Flying shear

Motion products

- 1 Modicon LMC058 controller
- 2 Lexium 32 servo drive
- 3 Lexium BMH and BSH servo motors
- 4 Lexium 32i integrated servo drive
- 5 Lexium MAX R3 multi-axis system

1

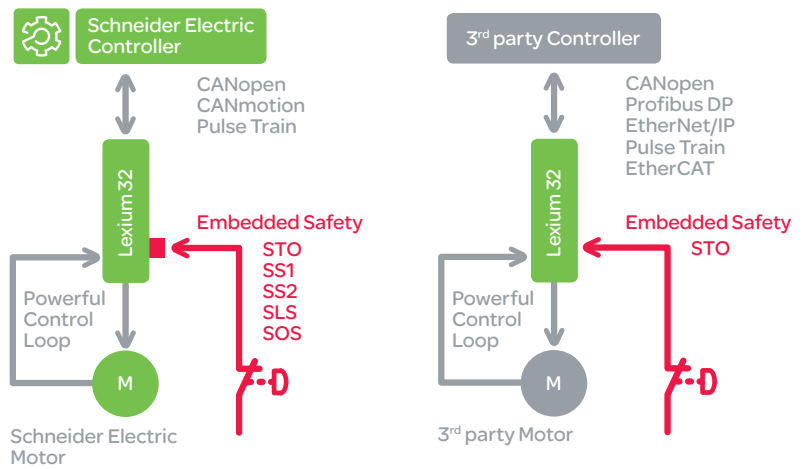


- > Easy to integrate in your architecture
- > Cost-effective solution
- > Superior control loop performance
- > Embedded safety functions

Whatever your architectures is like, our high-performance drives are easy to integrate

Schneider Electric offers a complete range of servo and integrated servo drives that allows you to realise any kind of motion architectures and applications. Regardless whether you work within a Schneider Electric solution or if you integrate the motion devices and functions in your own architecture.

Schneider Electric's offer helps you make the right choice.



Motion control	Interface	Coordinated movements					Synchronized movements		
		CANopen	Profibus DP	Ethernet I/P	Modbus TCP	Ethernet Powerlink	Pulse Train	CANmotion	EtherCAT
Lexium 23 Plus		✓					✓	✓	
Lexium 32		✓	✓	✓			✓	✓	✓
Lexium 32i		✓						✓	✓
Lexium ILA, ILE, ILS		✓	✓	✓	✓	✓	✓		✓



Embedded safety function

- > Simplified machine design and engineering
- > Less wiring
- > Simpler sensor systems
- > Shorter downtimes; resume exactly to the stage in progress before an incident. Compliance with international standards
- > Machine certification is made a lot easier

Embedded safety, get rid of the hassle of devising complex, proprietary safety concepts

Safety is a complex and costly issue in the design and operation of a machine. To make things a lot simpler for you, Schneider Electric servo and integrated drives come with "Safe Torque Off" (1) on board in accordance with the IEC/EN 61800-5-2 standard. This function is compliant with and certified according to international standards and provides numerous benefits.

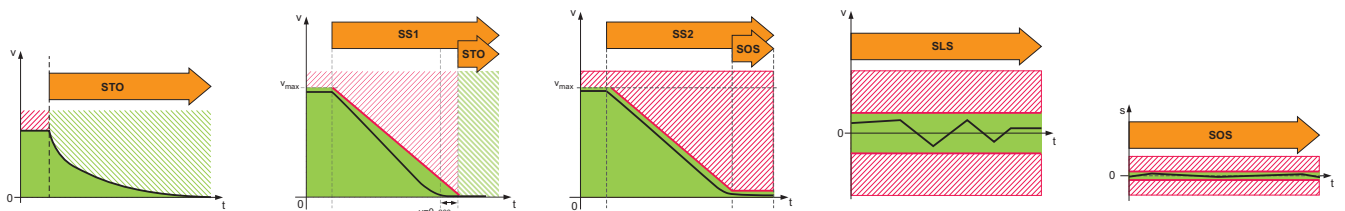
Additional safety

If your machine requires more safety functions than "Safe Torque Off", you can simply install the optional enhanced safety module eSM into the Lexium 32 servo drive. This module offers eSM safety module functions in accordance with the IEC/EN 61800-5-2 standard.

(1) Except Lexium 23 Plus.

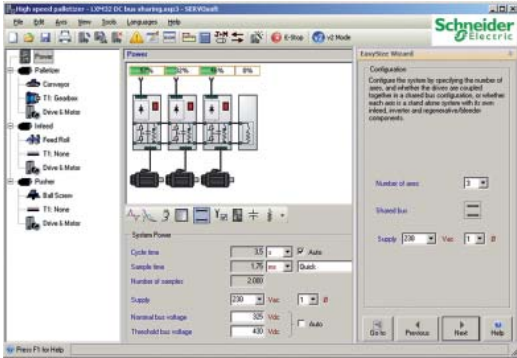


eSM optional safety module



Embedded Safety	STO	SS1	SS2	SLS	SOS
Drives					
Lexium 23 Plus					
Lexium 32	✓	✓ eSM	✓ eSM	✓ eSM	✓ eSM
Lexium 32i	✓				
Lexium ILA, ILE, ILP	✓				

1

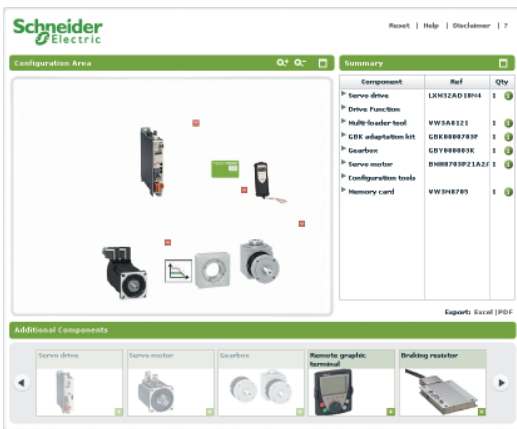


Sizing tool

Easily find the right product for your application

The user-friendly sizing tool helps you to find the right servo drives and motors for your machine. It includes different mechanisms, mechanical transformations and gearboxes. The complete project can be captured in one file which provides detailed power flow, energy storage analysis and accurate energy consumption.

To determine the size of your drives and motors, please contact our Customer Care Centre.

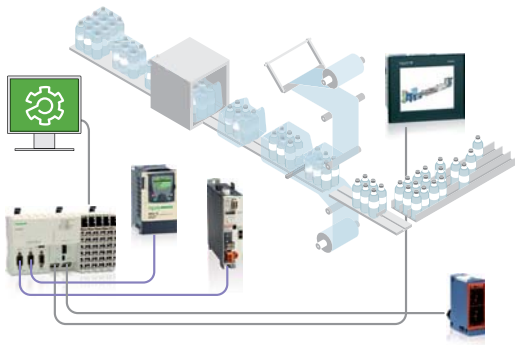


Configuration tool on www.schneider-electric.com

Configure your motion product in just a few clicks

Our graphical configurators simplify the configuration of motion products and their accessories. In just a few clicks, and without any assistance or in-depth knowledge of the range, you are guided to make your choices.

A bill of materials needed for your motion product will be created and can be exported in MS Excel or PDF format to simplify your ordering process.



Packaging solution

SoMachine simplifies the programming of your machine

The SoMachine™ Software offers 100% flexibility and optimization by allowing you to design, commission and service machines in a single software suite, resulting in a significant competitive advantage.

Decrease total machine cost by using a single environment and reducing design time

- > Install components in one step
- > One software for controllers, HMI and remote devices
- > Access to networked devices in pure transparency
- > Connect your cable only once, and download from our website with a single click
- > Re-use Schneider Electric's expertise and know-how with ready-to-use Application Function Blocks, templates and fully tested, validated and documented automation architectures



Drive configuration with SoMove software

SoMachine simplifies the commissioning of your drive

The SoMove software incorporates various functions for the device setup phases, such as configuration preparation, setup and maintenance.

A true offline mode allows:

- > Preparation of configuration files
- > File management and storage (save to hard disk or CD ROM, copy, rename and send by email, etc.)
- > Printing of the settings list
- > Preparation of files for the Multi-Loader and SoMove Mobile tools

The online mode is used to:

- > Configure, adjust, control and monitor
- > Transfer configuration files between SoMove V1.0 and the drive or soft starter

To facilitate setup and maintenance, SoMove

- > Can use a direct USB/RJ45 cable link or Bluetooth® wireless link
- > Is compatible with the Multi-Loader configuration tool and SoMove Mobile

Increase your efficiency and competitiveness with our services and support



 Design

Let's find the right solution for you

- > Application Design Experts (ADEs), Solution and Architecture Experts (SAEs) are available to assist you. They understand your needs and can propose innovative technical solutions including
 - > Advice
 - > Co-engineering services
 - > Feasibility testing and validation

Our consulting services are there to help

- > We understand your pain points and can propose the solutions to solve them
- > Audits

We execute the solution

- > Our solution design and delivery centers (Flex-Centers) are committed to quality results and schedules
 - > Project and program management
 - > Software and hardware engineering
 - > Testing, validating and commissioning the solution

Improve your team's competencies

- > Classroom-based training
- > On-site training

 Build



We deliver the solution

- > Availability of components
 - > Large worldwide network of distributors
- > Delivery through local partners
 - > Collaboration and management of partners
- > Schneider Electric as your solution provider
 - > Project management and responsibility
 - > Engineered solutions
 - > Third-party components (suppliers)

We improve services and support on your site

- > Secondment of qualified personnel to deliver on-site engineering and technical services

We improve your service team's competencies

- > Service and commissioning training

 With MachineStruxure, make your machines stand out right from the start



Operate



Provide services and support to you and your customers

- > Maintenance contracts
- > Spare parts
- > Repairs
- > Standard and express deliveries
- > Return of goods
- > Service expertise
 - > Preventive maintenance
 - > Contract extension
- > Customer International Support (CIS) as contact point
 - > Find the closest expert to solve your technical questions

Improve your customer's competencies

- > Classroom-based customer training
- > On-site training
- > Service and commissioning training



Improve



Improve your machine range

- > Consulting

Improve the machine in the production line

- > Audit
- > Services and Expertise
 - > Contract extension
 - > Upgrading
 - > Migration
- > Training

> With MachineStruxure, benefit from worldwide assistance and after-sales support

Servo Drives and Motors

Applications

Lexium servo drives are the perfect drives for applications involving high-precision and dynamic positioning

Lexium 23 Plus and BCH motor

Lexium 32 and BMH or BSH motor



Description

The Lexium 23 Plus servo range consists of two book-size servo drive models, Lexium 23A with CANopen interface, Lexium 23D with pulse train interface plus the motor family Lexium BCH from ultra low inertia to high inertia.

The Lexium 32 servo range consists of three high-performance book-size servo drive models, Lexium 32 Compact, Lexium 32 Advanced and Lexium 32 Modular, and two motor families, the versatile medium-inertia Lexium BMH and the dynamic low-inertia Lexium BSH.

Machines

Textile machines, Electronics machines, Packaging machines, Material working machines, Material handling machines, Printing machines

Packaging machines, Material handling machines, Material working machines, Assembling machines

Technical information

Power range	
Voltage range	
Speed	
Torque	

0.1 kW...7.5 kW
1 or 3-phase 170...255 VAC
1,000 rpm to 3,000 rpm depending on the motor
up to 47.74 Nm

0.15...7 kW
1-phase 115...240 VAC, 3-phase 208...480 VAC
up to 8,000 rpm
up to 84 Nm

Interfaces

CANopen

CANopen, CANmotion, PROFIBUS DP, DeviceNet, EtherNet/IP, Pulse train, +/- 10V Encoder modules for digital and analog encoders and resolvers

Safety functions

–

Safe Torque Off (STO) on board Enhanced Safety Module: Safe Stop 1 (SS1), Safe Stop 2 (SS2), Safely Limited Speed (SLS), Safe Operation Stop (SOS)

See page

14

15

Integrated Drives		Linear Motion
Lexium Integrated Drives contribute to extremely space-saving decentralised motion solutions		Lexium Linear Motion products are designed for maximum flexibility, performance and cost-effectiveness. This range offers products for linear movements in the automation industry from single-axis to multi-axis systems
Lexium ILA, ILE and ILS	Lexium 32i	Lexium PAS, CAS, TAS and MAX



Lexium ILx Integrated Drives comprise the motor, positioning controller, power electronics, fieldbus and "Safe Torque Off" function in an extremely compact single device. Lexium ILx Integrated Drives are available with multiple motor technologies (servo, brushless DC, stepper).	The Lexium 32i is an integrated servo drive and comprises motor, positioning controller, power electronics, fieldbus and "Safe Torque Off" function in an extremely compact single device.	Lexium Linear Motion is a comprehensive linear motion range comprising Lexium PAS portal axes, Lexium TAS linear tables, Lexium CAS cantilever and telescopic axes and Lexium MAX multi-axis systems.
Format adjustment, Printing machines, Material handling machines	Packaging machines, Material handling machines, Material working machines, Assembling machines	Material handling machines Material working machines On-the-fly working machines Assembling machines
150 - 305 W 12...48 VDC	0.6...2.2 kW 1-phase 115...240 VAC, 3-phase 400...480 VAC	Single axes: Stroke up to 5.5 m Load up to 150 kg Speed up to 8 m/s
up to 9,000 rpm	up to 3,600 rpm	–
up to 12 Nm	up to 7.8 Nm	–
RS485, CANopen, PROFIBUS DP, DeviceNet, EtherNet/IP, EtherCAT, Ethernet POWERLINK, Modbus TCP, Pulse train	CANopen, CANmotion, EtherCAT	Multi axes: Stroke up to 5.5 m Load up to 130 kg Speed up to 4 m/s Available as individual components or completely pre-assembled, customized systems with drives and motors
Safe Torque Off (STO) on board	Safe Torque Off (STO) on board	
26	27	33

General Motion Control

Servo Drives and Motors

Lexium 23 Plus, Lexium BCH



Lexium 23 Plus servo drives

Lexium 23 Plus, the compact servo drive combined with the powerful Lexium BCH servo motor, enhances your installation through added efficiency and flexibility

Easy integration

- > The numerous servo drive functions include speed and torque control, auto-tuning, and positioning
- > Open communication concept enables simple integration within a wide range of different control system architectures

Simple commissioning and lower installation costs

- > The Lexium 23 CT PC commissioning software includes an auto-tuning function which enables extremely fast start-up
- > The simplicity of the Lexium 23 Plus servodrive wiring simplifies installation and reduces global installation costs

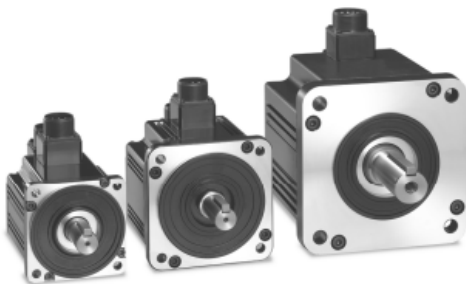
Compact range

- > The compact size of the Lexium 23 Plus makes it ideal for use where space is limited

Flexibility

Lexium 23 Plus servo drives feature standard digital and analog I/O, and one of the following communication interfaces, depending on the model:

- > Interface for CANopen/CANmotion machine bus (LXM23A)
- > Pulse/direction (P/D) interface (LXM23D)



BCH servo motors



Lexium 32 Compact
for control via
+/- 10 V or
pulse train input

Lexium 32 Advanced
for CANopen or
CANmotion
architectures

Lexium 32 Modular
is open to the world
of motion with
numerous modules

Lexium 32 consists of three high-performance book-size drives, Lexium 32 Compact, Advanced and Modular, and two motor families, the versatile medium-inertia Lexium BMH and the dynamic low-inertia Lexium BSH

Simplicity throughout the entire lifecycle of your machine

- > Fast engineering with powerful integration and design software (motor sizing, CAD and cabinet drawings, support for PLCopen libraries, commissioning software SoMove) reduces time-to-market
- > Simplified installation with easy access to removable, color-coded connectors, memory cards and multi-loader
- > Memory card and standardized "Faulty Device Replacement" (FDR) function with EtherNet/IP for fast device replacement
- > "Safe Torque Off" function on board

Openness and modularity

- > Intelligent, modular product concept responds to most requirements
- > Large selection of fieldbus modules for fast integration into your architecture
- > 3 encoder modules for machine encoder/second motor encoder
- > eSM module for additional safety functions

Power and performance

- > Easy auto-tuning for different levels of expertise
- > Superior motor control
- > Intelligent vibration and jerk suppression for long machine life
- > Two powerful motor ranges: the versatile medium-inertia Lexium BMH and the dynamic low-inertia Lexium BSH



Lexium BMH
is extremely versatile



Lexium BSH
is highly dynamic

General Motion Control

Servo Drives and Motors

Lexium 23 Plus

3

Main functions	Lexium23A-CAN version	Lexium23D-Pulse Train version
----------------	-----------------------	-------------------------------



Communication	CANopen CANmotion Pulse Train RS232	Pulse Train RS232
Operating modes	Jog mode Profile Position mode Profile Velocity mode Profile Torque mode Homing mode	Electronic gearbox Positioning mode Speed mode Torque mode
Functions	Auto-tuning 2-notch filters Position capture	Auto-tuning 2-notch filters Position capture
24V logic inputs	8 reassignable	8 reassignable
24V logic outputs	5 reassignable	5 reassignable
Analog inputs	2	2
Pulse control input	RS422 500 kHz (standard)/4 MHz (high-speed) 200 kHz open collector	
ESIM PTO output	1 RS422	1 RS422
Encoder	High-speed pulse train	High-speed pulse train
Architecture	Control via: CANopen CANmotion Pulse Train Analog input	Control via: Pulse Train Analog input
Type of servo drive	Lexium 23A	Lexium 23D

Main functions



Application type	From ultra-low inertia to high inertia, suitable for highly dynamic and high-load applications	
Flange size	40, 60, 80, 100, 130 and 180 mm	
Continuous stall torque	0.32 to 47.74 Nm	
Encoder type	20-bit incremental	
Degree of protection	Casing	IP65
	Shaft end	IP40 (standard)/IP65 (option)
Type of servo motor	Lexium BCH	

Servo drive	Servo motor	Power (w)	Rated torque (Nm)	Peak torque (Nm)	Rated speed (rpm)	Peak speed (rpm)	Inertial w/o brake (kg cm ²)	Motor inertia type
Single-phase: 200...255 V 50/60 Hz or three-phase: 170...255 V 50/60 Hz								
LXM23●U01M3X	BCH0401O●2●●●	100	0.32	0.96	3000	5000	0.037	ultra low
LXM23●U02M3X	BCH0601O●2●●●	200	0.64	1.92	3000	5000	0.177	ultra low
LXM23●U04M3X	BCH1301M●2●●●	300	2.86	8.59	1000	2000	8.17	medium
LXM23●U04M3X	BCH0602O●2●●●	400	1.27	3.82	3000	5000	0.277	ultra low
LXM23●U04M3X	BCH0801O●2●●●	400	1.27	3.82	3000	5000	0.68	low
LXM23●U04M3X	BCH1301N●2●●●	500	2.39	7.16	2000	3000	8.17	medium
LXM23●U07M3X	BCH1302M●2●●●	600	5.73	17.19	1000	2000	8.41	medium
LXM23●U07M3X	BCH0802O●2●●●	750	2.39	7.16	3000	3000	1.13	low
LXM23●U10M3X	BCH1303M●2●●●	900	8.59	25.78	1000	2000	11.18	medium
LXM23●U10M3X	BCH1001O●2●●●	1000	3.18	9.54	3000	5000	2.65	low
LXM23●U10M3X	BCH1302N●2●●●	1000	4.77	14.32	2000	3000	11.18	medium
LXM23●U15M3X	BCH1303N●2●●●	1500	7.16	21.48	2000	3000	11.18	medium
Three-phase: 170...255 V 50/60 Hz								
LXM23●U20M3X	BCH1002O●2●●●	2000	6.37	19.11	3000	5000	4.45	low
LXM23●U20M3X	BCH1304N●2●●●	2000	9.55	26.65	2000	3000	14.59	medium
LXM23●U20M3X	BCH1801N●2●●●	2000	9.55	26.65	2000	3000	34.58	high
LXM23●U30M3X	BCH1802N●2●●●	3000	14.32	42.96	2000	3000	54.95	high
LXM23●U30M3X	BCH1802M●2●●●	3000	19.1	57.29	1500	3000	54.95	high
LXM23●U45M3X	BCH1803N●2●●●	3500	16.71	50.31	2000	3000	54.8	high
LXM23●U45M3X	BCH1803M●2●●●	4500	28.65	71.62	1500	3000	77.75	high
LXM23●U55M3X	BCH1804M●2●●●	5500	35.01	87.53	1500	3000	99.78	high
LXM23●U75M3X	BCH1805M●2●●●	7500	47.74	119.36	1500	3000	142.7	high






General Motion Control

Servo Drives and Motors

Lexium 32

3

Main functions		Lexium 32 Compact	Lexium 32 Advanced	Lexium 32 Modular
				
Communication	Integrated	Modbus serial link Pulse train	Modbus serial link CANopen, CANmotion machine bus	Modbus serial link Pulse train
	As an option	–	–	CANopen, CANmotion machine bus, DeviceNet, EtherNet/IP, PROFIBUS DP, EtherCAT, I/O module
	Operating modes	Manual mode (JOG), Electronic gearbox, Speed control, Current control	Homing, Manual mode (JOG), Speed control, Current control, Position control	Homing, Manual mode (JOG), Motion sequence, Electronic gearbox, Speed control, Current control, Position control
	Functions	Auto-tuning, monitoring, stopping, conversion	Stop window, Rapid entry of position values	Stop window, Rapid entry of position values, Rotary axes, Position register
24 V \square logic inputs		6, reassignable	3, reassignable	4, reassignable
24 V \square capture inputs (1) (2)		–	1	2
24 V \square logic outputs (1)		5, reassignable	2, reassignable	3, reassignable
Analog inputs		2	–	–
Pulse control input		1, configurable as: RS 422 link 5 V or 24 V push-pull 5 V or 24 V open collector		
ESIM PTO output		RS 422 link		
Safety functions	Integrated	"Safe Torque Off" STO		
	As an option	–	–	Safe Stop 1 (SS1) and Safe Stop 2 (SS2) Safe Operating Stop (SOS) Safe Limited Speed (SLS)
Sensor	Integrated	SinCos Hiperface® sensor		
	As an option	–	–	Resolver encoder, Analog encoder, Digital encoder
Architecture		Control via: Logic or analog I/O	Control via: Motion controller via CANopen and CANmotion machine bus	Control via: Schneider Electric or third-party PLCs via communication buses and networks
Type of servo drive		LXM32C	LXM32A	LXM32M

Main functions



Application type	High load, With robust adjustment of the movement		High dynamic range, Power density
Flange size	70, 100, 140 and 190 mm		55, 70, 100 and 140 mm
Continuous stall torque	1.2 to 84 Nm		0.5 to 33.4 Nm
Encoder type	Single turn SinCos: 32,768 points/turn and 131,072 points/turn Multiturn SinCos: 32,768 points/turn x 4,096 turns and 131,072 points/turn x 4,096 turns		Single turn SinCos: 131,072 points/turn Multiturn SinCos: 131,072 points/turn x 4,096 turns
Degree of protection	Casing	IP 65 (IP 67 conformity kit as an option)	
	Shaft end	IP 50 or IP 65 (IP 67 conformity kit as an option)	
Type of servo motor	BMH		BSH

Communication modules



Lexium 32M can be connected to the following communication buses and networks: CANopen and CANmotion, DeviceNet, Profibus DP V1, EtherNet/IP, I/O module

Reference	Description	Part Number		
	CANopen/CANmotion module with 2 * RJ 45 connectors	VW3A3608		
	CANopen/CANmotion module with SUB-D 9 connector	VW3A3618		
	DeviceNet module	VW3M3301		
	Profibus DP V1 module	VW3A3607		
	EtherNet/IP module	VW3A3616		
	CANopen/CANmotion module with one 5-way screw terminal block	VW3A3628		
	EtherCAT module with 2 RJ45 connectors	VW3A3601		
	I/O module with 4DI, 2DO, 2AI, 2AO	VW3M3302		

Second encoder modules

	Machine	Motor
--	---------	-------



Lexium 32M has an input for an additional encoder to connect third-party motors (motor encoder) or to improve positioning accuracy (machine encoder)

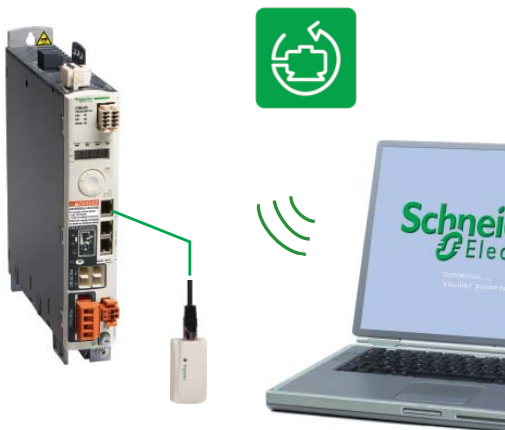
Reference	Description	Part Number	Machine	Motor
	Module for resolver encoder	VW3M3401		Yes
	Module for digital encoder (A/B/I, BiSS, EndDat 2.2, SSI)	VW3M3402	Yes	
	Module for analog encoder (1 Vpp/Hall, 1 Vpp, Hiperface)	VW3M3403	Yes (Hiperface only)	Yes

Safety module



The eSM module allows Lexium 32M servo drives to access additional IEC/EN 61800-5-2 safety functions: SS1, SS2, SLS, SOS

Reference	Description	Part Number		
	The eSM safety module	VW3M3501		



SoMove setup software

The SoMove setup software is used to configure, adjust, debug and maintain the Lexium 32 servo drive, just like other Schneider Electric variable speed drives and starters. It communicates via a Bluetooth® wireless link with the servo drive, which is equipped with the Modbus- Bluetooth® adaptor (VW3A8 114).

SoMove Mobile application for mobile phone

The SoMove Mobile software converts any compatible mobile phone into a remote graphic display terminal, offering an identical Human-Machine Interface. Particularly suitable for on-site or remote maintenance operations, the SoMove Mobile software can be used to print out and save configurations, import them from a PC and export them to a PC, or to a servo drive equipped with the Modbus adaptor via the Bluetooth® wireless link.

Lexium 32 servo drive/BMH or BSH servo motor combinations



3

Servo motors				Lexium 32C, 32A and 32M servo drives			
BMH (IP50, IP65 or IP67)		BSH (IP50, IP65 or IP67)		100...120 V single-phase supply voltage with integrated EMC filter			
				LXM32●U90M2			
				Continuous output current: 3 A rms			
				Nominal operating point (1)			Stall torques
Type of servo motor	Rotor inertia	Type of servo motor	Rotor inertia	Nominal torque	Nominal speed	Nominal power	M_0/M_{max} (2)
	kgcm ²		kgcm ²	Nm	rpm	W	Nm/Nm
		BSH0551T	0.06	0.49	3000	150	0.5/1.5
		BSH0552T	0.10	0.77	3000	250	0.8/1.9
		BSH0553T	0.13				
BMH0701T	0.59						
		BSH0701T	0.25				
		BSH0702T	0.41				
BMH0702T	1.13						
BMH0703T	1.67						
		BSH1001T	1.40				
BMH1001T	3.2						
BMH1002T	6.3						

(1) These values are given for a 240 V single-phase supply voltage.

(2) M_0 : Continuous stall torque,

M_{max} : Peak stall torque.



LXM32●U18M2 Continuous output current: 6 A rms				LXM32●D30M2 Continuous output current: 10 A rms			
Nominal operating point (1)			Stall torques	Nominal operating point (1)			Stall torques
Nominal torque	Nominal speed	Nominal power	$M_0/M_{max} (2)$	Nominal torque	Nominal speed	Nominal power	$M_0/M_{max} (2)$
Nm	rpm	W	Nm/Nm	Nm	rpm	W	Nm/Nm
1.14	3000	350	1.2/3.3				
1.35	2500	350	1.4/4.2				
1.36	2500	350	1.4/3.5				
				2.07	2500	550	2.2/6.1
				2.3	2500	600	2.5/6.4
				3.1	2000	650	3.4/8.7
				2.75	2500	700	3.3/6.3
				3.3	2000	700	3.4/8.9
				3.5	2000	750	6/10.3

Lexium 32 servo drive/BMH or BSH servo motor combinations

Servo motors				Lexium 32C, 32A and 32M servo drives			
BMH (IP50, IP65 or IP67)		BSH (IP 50, IP65 or IP67)		LXM32●U45M2			
				200...240 V single-phase supply voltage with integrated EMC filter			
				Continuous output current: 1.5 A rms			
				Nominal operating point (1)			Stall torques
Type of servo motor	Rotor inertia	Type of servo motor	Rotor inertia	Nominal torque	Nominal speed	Nominal power	M_0/M_{max} (2)
	kgcm ²		kgcm ²	Nm	rpm	W	Nm/Nm
		BSH0551T	0.06	0.45	6000	300	0.5/1.4
		BSH0552T	0.10				
		BSH0553T	0.13				
		BSH0701T	0.25				
BMH0701T	0.59						
		BSH0702T	0.41				
		BSH0703T	0.58				
BMH0702T	1.13						
		BSH1001T	1.40				
BMH0703T	1.67						
BMH1001T	3.2						
		BSH1002T	2.31				
BMH1002T	6.3						
BMH1003T	9.4						
BMH1401P	16.5						

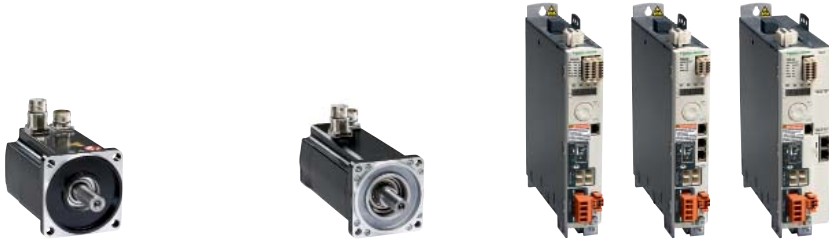
(1) These values are given for a 240 V single-phase supply voltage.

(2) M_0 : Continuous stall torque,

M_{max} : Peak stall torque.

LXM32●U90 M2 Continuous output current: 3 A rms				LXM32●D18M2 Continuous output current: 6 A rms				LXM32●D30M2 Continuous output current: 10 A rms			
Nominal operating point (1)			Stall torques	Nominal operating point (1)			Stall torques	Nominal operating point (1)			Stall torques
Nominal torque	Nominal speed	Nominal power	M_0/M_{max} (2)	Nominal torque	Nominal speed	Nominal power	M_0/M_{max} (2)	Nominal torque	Nominal speed	Nominal power	M_0/M_{max} (2)
Nm	rpm	W	Nm/Nm	Nm	rpm	W	Nm/Nm	Nm	rpm	W	Nm/Nm
0.74	6000	450	0.8/2.5								
0.84	6000	550	1.2/3								
0.94	5000	500	1.3/3.5								
1.1	4000	450	1.4/4								
				1.8	5000	950	2.2/7.2				
				2.1	4000	900	2.6/7.4				
				2.1	4000	900	2.5/7.4				
				2.2	4000	900	2.7/7.5				
				2.9	3000	900	3.4/10.2				
				2.8	3000	900	3.4/10.2				
								3.7	4000	1500	5.8/16.4
								4.6	3000	1450	6/18.4
								5.6	2500	1450	8.2/22.8
								6.9	2000	1450	10.3/30.8

Lexium 32 servo drive/BMH or BSH servo motor combinations



3

Servo motors				Lexium 32C, 32A and 32M servo drives							
				208...480 V three-phase supply voltage with integrated EMC filter							
BMH (IP50, IP65 or IP67)		BSH (IP50, IP 65 or IP67)		LXM32●U60N4 Continuous output current: 1.5 A rms				LXM32●D12N4 Continuous output current: 3 A rms			
				Nominal operating point (1)			Stall torques	Nominal operating point (1)			Stall torques
Type of servo motor	Rotor inertia	Type of servo motor	Rotor inertia	Nominal torque	Nominal speed	Nominal power	$M_v/M_{max}^{(2)}$	Nominal torque	Nominal speed	Nominal power	$M_v/M_{max}^{(2)}$
	kgcm ²		kgcm ²	Nm	rpm	W	Nm/Nm	Nm	rpm	W	Nm/Nm
		BSH0551P	0.06	0.48	6000	300	0.5/1.5				
		BSH0552P	0.10	0.65	6000	400	0.8/2.5				
		BSH0553P	0.13	0.65	6000	400	1.05/3.5				
BMH0701P	0.59			1.1	3000	350	1.2/4.2				
BMH0701P	0.59							1.3	5000	700	1.4/4.2
		BSH0701P	0.25					1.32	5000	700	1.4/3.5
		BSH0702P	0.41					1.64	5000	850	2.2/7.6
BMH1001P	3.2							1.9	4000	800	3.3/10.8
BMH0702P	1.13							2.2	3000	700	2.5/7.4
BMH0703P	1.67										
		BSH0703P	0.58								
		BSH1001P	1.40								
BMH1001P	3.2										
BMH1002P	6.3										
		BSH1002P	2.31								
BMH1003P	9.4										
		BSH1003P	3.2								
BMH1401P	16.5										
		BSH1004P	4.2								
		BSH1401P	7.4								
BMH1402P	32.0										
		BSH1402T	12.7								
		BSH 1403T	17.9								
BMH1403P	47.5										
		BSH1404P	23.7								
BMH1901P	67.7										
BMH1902P	130										
BMH1903P	194										

(1) These values are given for a 240 V single-phase supply voltage.

(2) M_v : Continuous stall torque,

M_{max} : Peak stall torque.

General Motion Control

Integrated Drives

Lexium ILA, ILE, ILS



Lexium ILE
with brushless
DC motor



Lexium ILA
with AC synchronous
servo motor



Lexium ILS
with 3-phase
stepper motor

The Lexium IL● comprises the motor, positioning controller, power electronics, fieldbus and “Safe Torque Off” function in an extremely compact single device

Compact and cost-effective

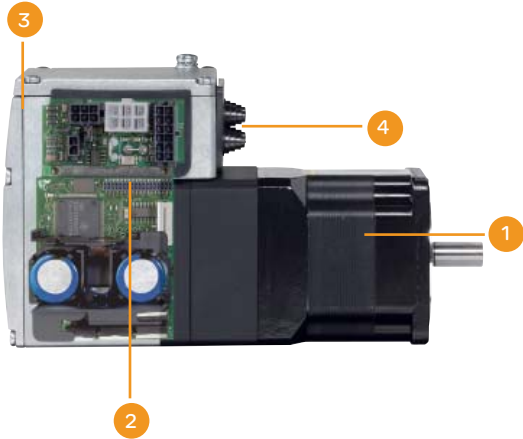
- > An unprecedented level of integration for new dimensions in machine planning, design and installation
- > Reduced cabinet size, less air conditioning in cabinet, less wiring and smaller machine footprint, resulting in reduced complexity and cost
- > Same level of performance as any integrated drive, even with dimensions as small as 57 x 100 x 92 mm (W x L x H, Lexium ILS)

Flexible and modular machine concepts

- > Three motor technologies - servo, brushless DC, stepper - allow you to combine the individual benefits of each technology: dynamics, flexibility, precision
- > 8 fieldbuses for seamless integration into industrial automation environments (RS 485, Profibus DP, CANopen, DeviceNet, Ethernet Powerlink, EtherCAT, Modbus TCP, EtherNet/IP)
- > Versatile connection via PCB connectors or industrial connectors

Simple

- > Easy and reduced wiring
- > Integrated EMC filter
- > Fast and simple commissioning with user-friendly commissioning software
- > PLCopen application function blocks included
- > “Safe Torque Off” function on board



- 1 Three motor technologies
- 2 Integrated electronics
- 3 Integrated fieldbus
- 4 Flexible connection technologies



Lexium 32i



- 1 I/O and fieldbus connector module
- 2 Power supply connector module
- 3 Drive control unit
- 4 Motor with power stage

Lexium 32i combines the simplicity of the Lexium 32 drive and the powerful Lexium BMI motor in one single unit. Its modular concept allows you to find the most suitable drive for your motion application

Flexibility

- > Create your own drive to suit your needs by using a combination of the four components to build a product that meets your specific application requirements
- > I/O and fieldbus modules are available with industrial connectors or with a terminal connector module which can be mounted on the top or on the rear of the product

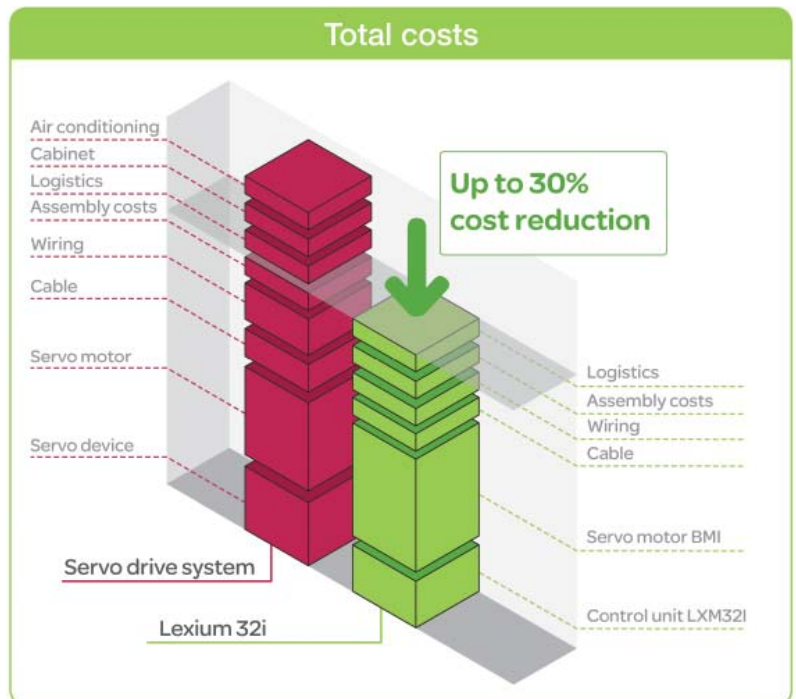
Simplicity

- > Thanks to Schneider Electric's on-line configurator, it is easy to select the four catalogued components which will make your Lexium 32i dedicated to your application
- > The four components are easy to assemble, simply click on each component and attach
- > Settings can be stored on the optional Multi Loader or memory card. Simply insert the card to reload them in the device

Cost efficiency

- > Reduce cabinet space by up to 60%: unlike traditional servo drives that are installed in a cabinet, the Lexium 32i is installed directly on the machine to help you improve cost and energy efficiency
- > Reduce total cost of ownership by up to 30% due to less cabinet cooling, no need for motor cables or cabinet space for the drive
- > Reduce assembly time with simplified wiring and easy cabling

4



Integrated Drives	Lexium ILA	Lexium ILE	Lexium ILS
-------------------	------------	------------	------------



Type of process		Dynamic process and accurate positioning	Automatic format adjustment	Short distance movements with accurate positioning
Type of technology		Integrated drive with servo motor	Integrated drive with DC brushless motor	Integrated drive with three-phase stepper motor
Main characteristics		Highly dynamic Compact Integrated holding brake as an option	High holding torque without power Integrated gearbox as an option	High torque at low speed
Dynamic		★★★★	★★	★★★★
Precision and stability		★★★★	★★	★★★★
Energy saving		★★★★★	★★★★	★★
Motor inertia		Medium		
Control interface	Control signals	Input/output		Pulse/direction Input/output
	Buses and networks	CANopen, PROFIBUS DP, RS 485 serial link, DeviceNet, EtherCAT, Modbus TCP, Ethernet Powerlink, EtherNet/IP		
	Motion bus	-		
Drive/motor combinations	Nominal power	150...350 W	100...350 W	100...350 W
	Nominal speed	500...9000 rpm	1500...7000 rpm	0...1000 rpm
	Nominal torque	0.26...0.78 Nm	0.18...0.5 Nm	0.45...6 Nm
Drive characteristics	Safety function	"Safe Torque Off"		
Power supply		24...48 VDC max. 10 A		
Motor characteristics	Type of sensor (resolution)	Single-turn SinCos encoder (16,384 increments/turn) Multiturn SinCos encoder (16,384 increments/turn × 4,096 turns)	Absolute value encoder (12...1,380 increments/turn)	Index pulse monitoring
	Motor flange size	57	66	57, 85
Accessories		Cable, Connector kits, Installation sets, Commissioning tools, Planetary gearboxes		
References		ILA	ILE	ILS

4

Lexium ILA with servo motor	Nominal torque (Nm)	Maximum torque (Nm)	Nominal speed (rpm)	Maximum speed (rpm)	Nominal power (W)
-----------------------------	---------------------	---------------------	---------------------	---------------------	-------------------



ILA1 for CANopen, PROFIBUS DP, RS485					
ILA1●571P	0.26	0.6	5500	7500	150
ILA1●571T	0.26	0.43	7500	11500	200
ILA1●572P	0.45	0.72	4300	6200	200
ILA1●572T	0.41	0.61	5000	7500	215
ILA2 for DeviceNet, EtherCAT, EtherNet/IP, Modbus TCP, Ethernet Powerlink					
ILA2●571P	0.44	0.62	5100	7000	235
ILA2●571T	0.31	0.45	7000	9000	255
ILA2●572P	0.78	1.62	3400	4300	275
ILA2●572T	0.57	0.85	5100	6800	305

Lexium ILE with integral spur gearbox.

Ratios:18:1, 38:1, 54:1, 115:1

Lexium ILE with integral worm gearbox with hollow shaft.

Ratios: 24:1, 54:1, 92:1, 115:1

Lexium ILE with brushless DC motor	Nominal torque (Nm)	Detent torque (Nm)	Nominal speed (rpm)	Maximum speed (rpm)
------------------------------------	---------------------	--------------------	---------------------	---------------------



ILE1 for CANopen, PROFIBUS DP, RS485				
ILE1●661	0.24	0.08	4800	5000
ILE1●661 spur gearing	up to 11.0	up to 8.0	44	44
ILE1●661 worm gearing	up to 10.6	up to 16.7	44	44
ILE2 for DeviceNet, EtherCAT, EtherNet/IP, Modbus TCP, Ethernet Powerlink				
ILE2●661	0.26	0.08	6000	7000
ILE2●661 spur gearing	up to 12	up to 9.19	44	44
ILE2●661 worm gearing	up to 10.6	up to 16.7	44	44
ILE2●662	0.5	0.106	5000	7000

Lexium ILS with three-phase stepper motor	Maximum torque (Nm)	Holding torque (Nm)	Speed (rpm)
---	---------------------	---------------------	-------------



ILS1 for CANopen, PROFIBUS DP, RS485, Pulse-Direction, Motion Sequence Mode			
ILS1●571●	0.45	0.51	1000
ILS1●572●	0.9	1.02	600
ILS1●573●	1.5	1.7	450
ILS1●851●	2.0	2.0	450
ILS1●852●	4.0	4.0	200
ILS1●853P	6.0	6.0	120
ILS1●853T	4.5	4.5	300
ILS2 for DeviceNet, EtherCAT, EtherNet/IP, Modbus TCP, Ethernet Powerlink			
ILS2●571●	0.45	0.51	1100
ILS2●572●	0.9	1.02	900
ILS2●573●	1.5	1.7	600
ILS2●851●	2.0	2.0	600
ILS2●852●	4.0	4.0	380
ILS2●853P	6.0	6.0	200
ILS2●853T	4.5	4.5	300

Main functions | **Drive control unit**



Communication	Interfaces	Modbus serial link CANopen, CANmotion, EtherCAT	
	Operating modes	Homing Manual mode (JOG) Speed control Current control Position control	
	Functions	Auto-tuning, monitoring, stopping, conversion Stop window Rapid entry of position values	
24 V logic inputs		4	
24 V logic outputs		2	
Safety function		"Safe Torque Off" STO	
Architecture		Control via: Motion controller via CANopen CANmotion machine bus	Control via: EtherCAT
Type of servo drive		LXM32ICAN	LXM32IECT

Drive control unit | **LXM32I-CAN** | **LXM32IECT**



Description	Connector for bus	Number of I/O	STO function		
Industrial connector module for I/O and fieldbus Positive logic inputs (Source)	2 M12 connectors	4 logic inputs with M8 connectors	Yes	VW3M9101	VW3M9106
			–	VW3M9102	VW3M9107
		2 logic inputs with M8 connector	Yes	VW3M9103	VW3M9108
			–	VW3M9104	VW3M9109
Industrial connector module for I/O and fieldbus Negative logic inputs (Sink)	2 M12 connectors	4 logic inputs with M8 connectors	Yes	VW3M9201	VW3M9206
			–	VW3M9202	VW3M9207
		2 logic inputs with M8 connectors	Yes	VW3M9203	VW3M9208
			–	VW3M9204	VW3M9209
Terminal connector module for I/O and fieldbus Top part with eight drill holes for cable gland (3): 6 x M12 and 2 x M16	–	4 logic inputs 2 logic outputs	Yes	VW3M9105	VW3M9110

Description | **Reference**



Single-phase power supply module for Lexium 32i	VW3M9001
Three-phase power supply module for Lexium 32i	VW3M9002

Main functions	Servo motor
----------------	-------------



Application type	High load, With robust adjustment of the movement	
Flange size	70, 100	
Nominal torque	2.2 to 5.6 Nm	
Encoder type	Single-turn SinCos: 32,768 points/turn and 131,072 points/turn Multiturn SinCos: 32,768 points/turn x 4,096 turns and 131,072 points/turn x 4,096 turns	
Degree of protection	Casing	IP65
	Shaft end	IP54 or IP 65
Type of servo motor	BMI	

Lexium BMI servo motor

Power supply	115 V single-phase supply				
Type of servo motor	Rotor inertia kgcm ² without brake	Nominal operating point (1)		Nominal power (kW)	Stall torques M_0/M_{max} (2)
		Nominal torque (Nm)	Nominal speed (rpm)		
BMI702T	1.13	2.2	1700	0.4	2.3/6.6
BMI703T	1.67	2.9	1400	0.4	3/8.6
BMI1002T	6.28	5.4	1400	0.75	5.4/14.5

Power supply	230 V single-phase supply				
Type of servo motor	Rotor inertia kgcm ² without brake	Nominal operating point (1)		Nominal power (kW)	Stall torques M_0/M_{max} (2)
		Nominal torque (Nm)	Nominal speed (rpm)		
BMI702T	1.13	1.7	4000	0.7	2.3/6.6
BMI703T	1.67	2.2	3200	0.7	3/8.6
BMI1002T	6.28	4.4	3000	1.3	5.4/14.5

Power supply	208 V three-phase supply				
Type of servo motor	Rotor inertia kgcm ² without brake	Nominal operating point (1)		Nominal power (kW)	Stall torques M_0/M_{max} (2)
		Nominal torque (Nm)	Nominal speed (rpm)		
BMI702P	1.13	2.4	1800	0.4	2.5/6.8
BMI703P	1.67	2.9	1600	0.45	3/8.6
BMI1002P	6.28	5.4	1900	1	5.4/14
BMI1003P	9.37	7.2	1500	1	7.2/19.2

Power supply	400 V three-phase supply				
Type of servo motor	Rotor inertia kgcm ² without brake	Nominal operating point (1)		Nominal power (kW)	Stall torques M_0/M_{max} (2)
		Nominal torque (Nm)	Nominal speed (rpm)		
BMI07021●13	1.13	2.2	3600	0.8	2.5/6.8
BMI07031●67	1.67	2.7	3300	0.9	3/8.6
BMI10026●28	6.28	5.1	3800	1.9	5.4/14
BMI10039●37	9.37	6.8	3000	2	7.2/19.2

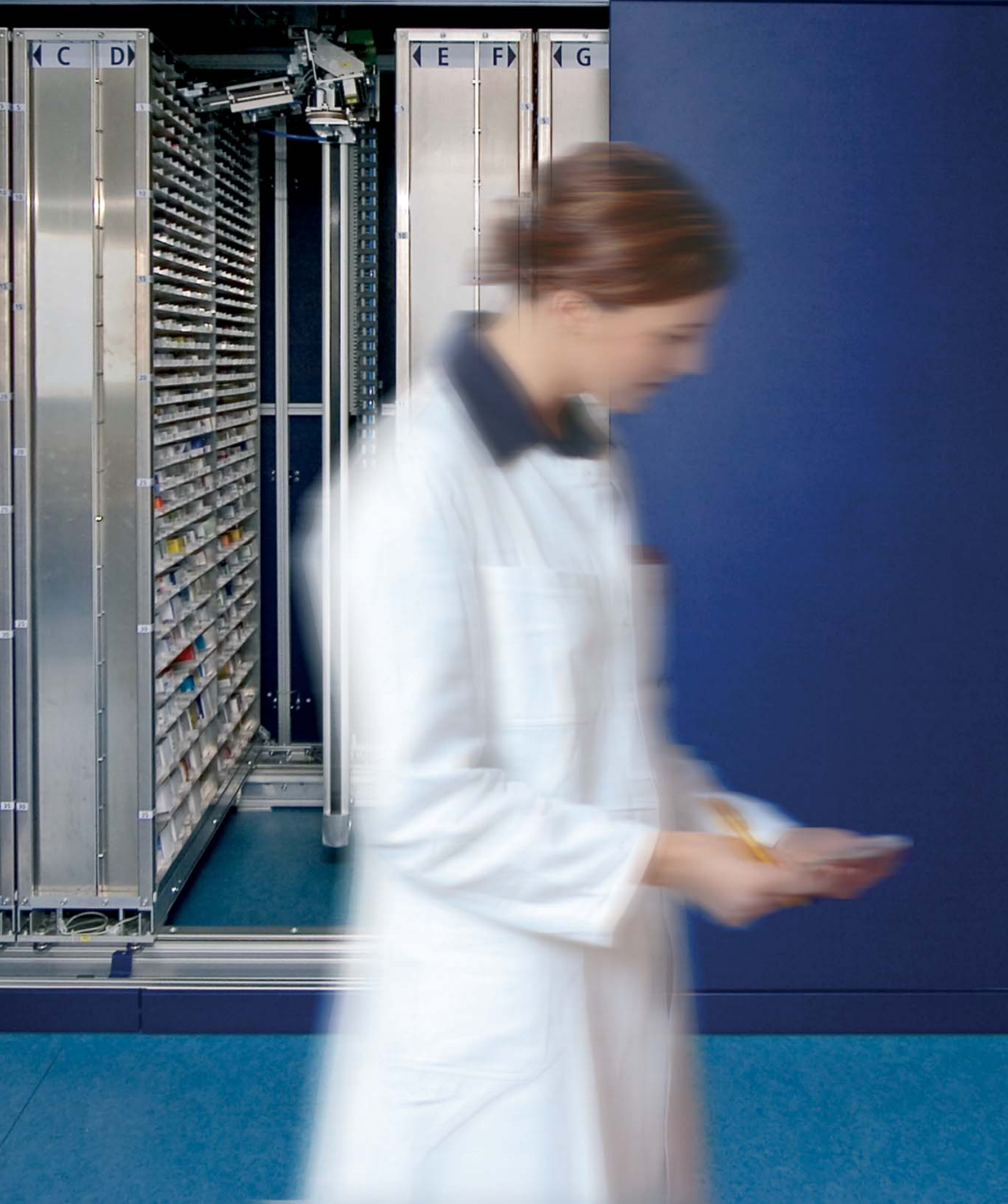
Power supply	480 V three-phase supply				
Type of servo motor	Rotor inertia kgcm ² without brake	Nominal operating point (1)		Nominal power (kW)	Stall torques M_0/M_{max} (2)
		Nominal torque (Nm)	Nominal speed (rpm)		
BMI07021●13	1.13	2	4400	0.9	2.5/6.8
BMI07031●67	1.67	2.3	3900	0.9	3/8.6
BMI10026●28	6.28	4.1	4700	1.9	5.4/14
BMI10039●37	9.37	5.6	3700	2.1	7.2/19.2

(1) These values are given for a 240 V single-phase supply voltage.

(2) M_0 : Continuous stall torque,
 M_{max} : Peak stall torque

Automatic Store and Pick System

Fully automatic dispensary system for pharmacies,
based on Schneider Electric products





Lexium MAX
Multi-axis systems for 2 or 3-dimensional positioning solutions



Lexium CAS
Standardised cantilever and telescopic axes



Lexium PAS
Portal axes with fixed-axis body and moving carriage

Lexium Linear Motion is a comprehensive linear motion range comprising Lexium PAS portal axes, Lexium TAS linear tables, Lexium CAS cantilever and telescopic axes and Lexium MAX multi-axis systems

Solutions for numerous linear motion tasks

- > For axis systems below, above and next to the working area, with any combination of arrangements
- > Up to three dimensions with stroke lengths of up to 5500 mm
- > Any combination of axis types

Modular kit system for consistent, easy mounting and maintenance

- > Axes with identical adaptation and motor interfaces
- > < 5 minutes for motor replacement due to flexible adaptation
- > Large selection of versions, e.g. for special ambient conditions (corrosion-resistant)
- > Completely pre-assembled with energy supply chain
- > Common spare parts
- > Optimized parts logistics

Customized and complete solutions

- > Single-axis and multi-axis systems adapted to individual requirements in terms of length and stroke, precise to within a millimeter
- > Available with mounted motors and/or gearboxes
- > Complete systems available including controllers, drives and motors

Product	Lexium PAS B	Lexium PAS S
---------	--------------	--------------



Axis type	Portal axes	
Movement	Number of directions	1
	Movement type	Typically horizontal
	Position of the load	On carriage
Drive	Toothed belt	Ballscrew
Type of guide	Ball or roller	Ball
Main characteristics	High dynamic response, Long stroke length, High positioning speed	High precision movement (positioning, repeatability, guiding), High feed forces, High rigidity
Dynamic response	★★★★★	★★★
Precision	★★★	★★★★★
Maximum payload	100 kg	100 kg
Maximum driving force	2600 N	4520 N
Maximum speed of movement of the load	8 m/s	1.25 m/s
Maximum working stroke	5500 mm	3000 mm
Repeatability	± 0.05 mm	± 0.02 mm
Options	Choice of guide type: Ball (for applications requiring high forces and torques) or roller (simple, cost-effective solution), Wide range of sensors, Choice of carriage type for adapting to the load, Option to add carriages, Protective metal strip	Choice of pitch, Protective metal strip, Wide range of sensors, Choice of carriage type for adapting to the load, Option to add carriages, Option to add ballscrew supports for longer axes
Reference	PAS4●B	PAS4●S

Lexium TAS	Lexium CAS 4	Lexium CAS 3	Lexium CAS 2
------------	--------------	--------------	--------------



Linear tables	Cantilever axes with mobile structure on profile	Cantilever axes with mobile structure on parallel rods	Telescopic axes
1			
Typically horizontal	Typically vertical		Typically horizontal
On carriage	On the side of the profile or on the 2 end blocks	On the 2 end blocks	On carriage
Ballscrew	Toothed belt	Toothed belt or rack	Toothed belt
Double, ball	Ball or roller	Ball	Ball or roller
High precision movement (positioning, repeatability, guiding), High feed forces, High rigidity, Feed movement without mechanical backlash	Long stroke length, High feed forces, Option to mount the load on the side of the profile or on the end blocks, High rigidity	Compact, Mobile structure with light travel weight	Long stroke length from a compact unit, High rigidity, High dynamic response
★★	★★★★	★★★★	★★★★
★★★★★	★★★	★★★	★★
150 kg	50 kg	18 kg	35 kg
2580 N	2150 N	705 N	1500 N
1 m/s	3 m/s	3 m/s	3 m/s
1500 mm	1200 mm	500 mm	2400 mm
± 0.02 mm	± 0.05 mm	± 0.05 mm	± 0.1 mm
Choice of pitch, Several different motor mounting options	Choice of guide type: Ball (for applications requiring high forces and torques) or roller (simple, cost-effective solution), Protective metal strip, Anti-corrosion version, Wide range of sensors	Anti-corrosion version, Anti-static belt	Choice of guide type: Ball (for applications requiring high forces and torques) or roller (simple, cost-effective solution), Choice of carriage type for adapting to the load
TAS4	CAS4	CAS3	CAS2

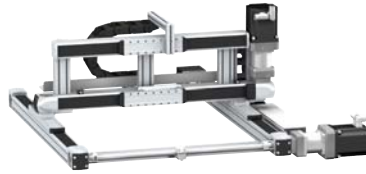
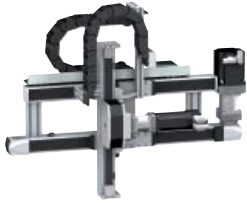
Product	Lexium MAXH	Lexium MAXS
---------	-------------	-------------



Axis type		Double portal axes	
Movement	Number of directions	1	
	Movement type	Combination of two parallel axes	
	Position of the load	On two parallel carriages	
Multi-axis system type		PAS 4●B axes + PAS 4●H support axis (driven by the load)	PAS 4●B + PAS 4●B axes (shaft-driven)
Drive		Toothed belt on one axis	Toothed belt on both axes
Type of guide		Ball or roller	Ball or roller
Main characteristics		<input type="checkbox"/> Long stroke length, High dynamic response, High precision movement (positioning, guiding)	<input type="checkbox"/> Long stroke length, High precision movement (positioning, guiding), High feed forces
Maximum payload		250 kg	300 kg
Maximum working stroke	On the X-axis	5500 mm	
	On the Y-axis	–	
	On the Z-axis	–	
Options		<input type="checkbox"/> Choice of guide type: Ball (for applications requiring high forces and torques) or roller (simple, cost-effective solution), Protective metal strip, Anti-corrosion version, Anti-static belt, Wide range of sensors, Several different motor mounting options, Variable distance between the two axes	
Reference		MAXH	MAXS

5

Lexium MAXP	Lexium MAXR2	Lexium MAXR3
-------------	--------------	--------------



Linear positioners	Portal robots	
2		3
Horizontal and vertical: Combination of one X-axis and one Z-axis	Horizontal: Combination of two perpendicular axes X and Y	Horizontal and vertical: Combination of two perpendicular axes X and Y and one Z-axis
On the side or on the end blocks of the Z-axis profile	On the Y-axis carriage	On the side or on the end blocks of the Z-axis profile
MAX S + CAS 4 axes MAX S + CAS 3 axes	MAX S + MAX H axes MAX S + PAS 4●B axes	MAX S + MAX H + CAS 4 axes MAX S + MAX H + CAS 3 axes
Toothed belt on each axis		
Ball or roller		
<input type="checkbox"/> Dynamic load positioning	<input type="checkbox"/> Long stroke length on both axes	<input type="checkbox"/> Long stroke length on three axes
50 kg	130 kg	50 kg
5500 mm		
–	1500 mm	1500 mm
1200 mm	–	1200 mm
<input type="checkbox"/> Choice of guide type: Ball (for applications requiring high forces and torques) or roller (simple, cost-effective solution), Wide range of sensors Supplied as standard: Protective metal strip, Anti-corrosion version		
MAXP	MAXR●2	MAXR●3

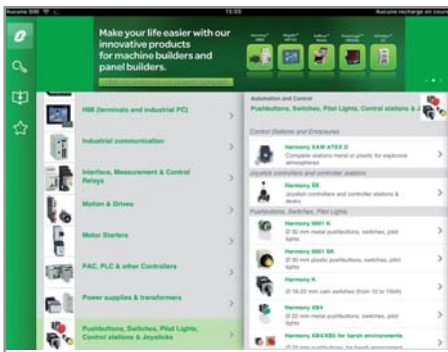
Search, view, and download from our website

Use your tablet or your PC to quickly access detailed and comprehensive information on our products

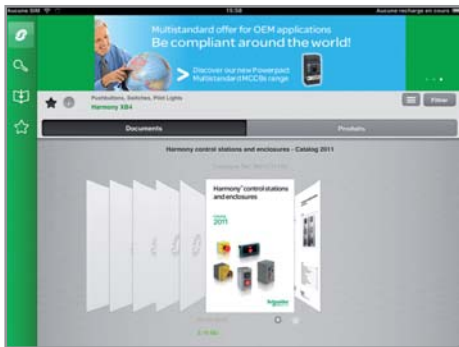
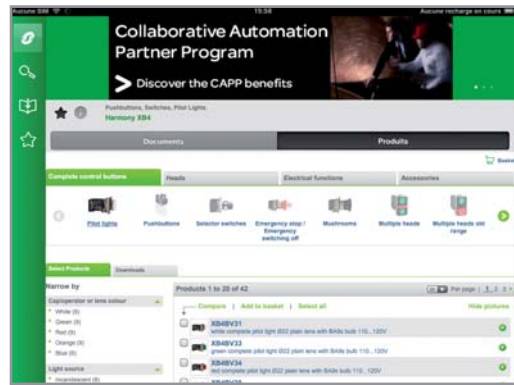


Tablets

Application name: "Automation Library by Schneider Electric"



Product ranges displayed by function



Dynamic catalogues (hyperlinks, video, etc.)

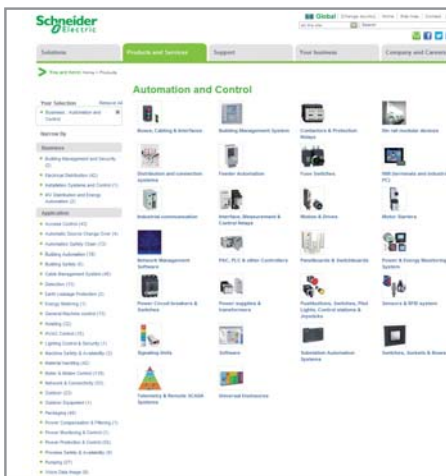


Product selector: dynamic filters to find your part number easily

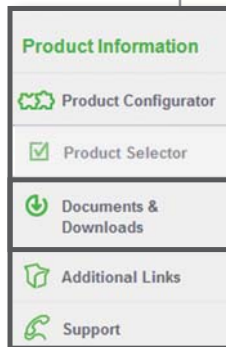
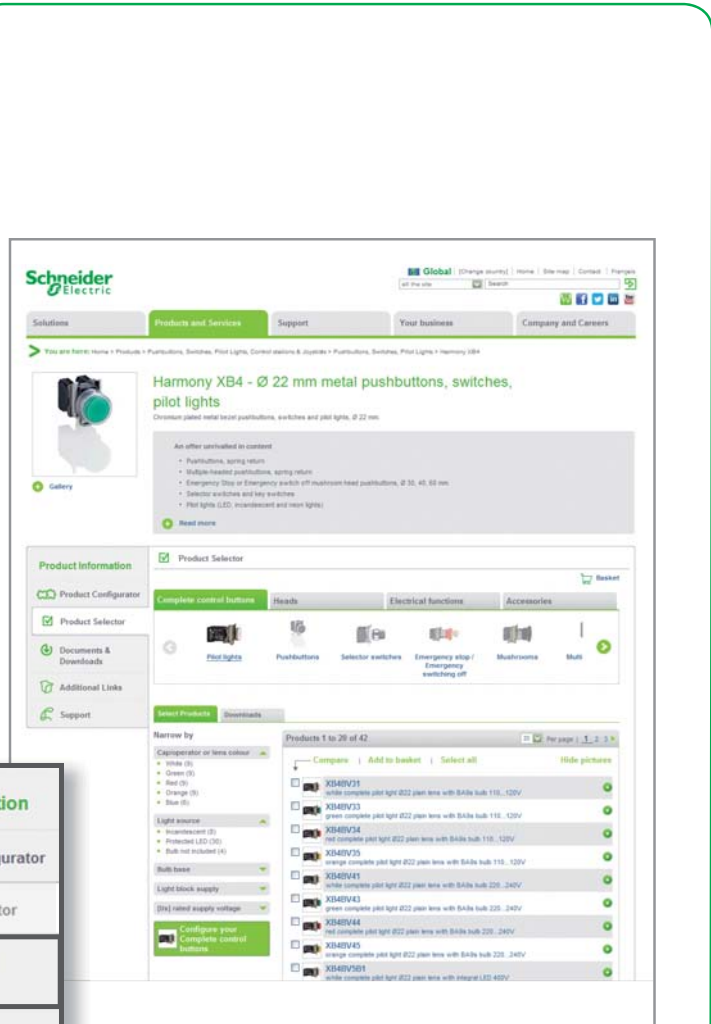


Personal computer

Path: www.schneider-electric.com > **Products and Services** > Automation and control > Product offer



Product ranges
displayed by function



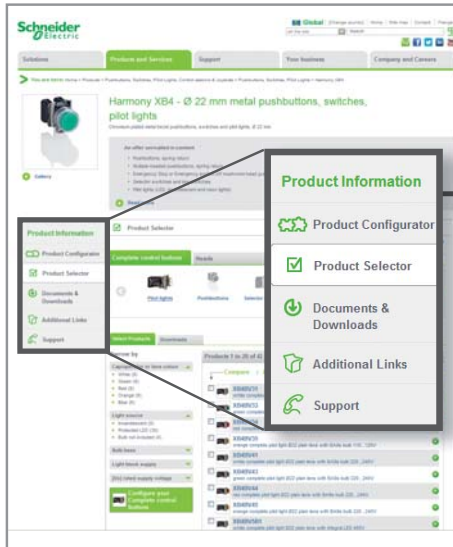
Dynamic catalogues
(hyperlinks, video, etc.)

Product selector: dynamic filters to find your part number easily

Access product references with customized tools

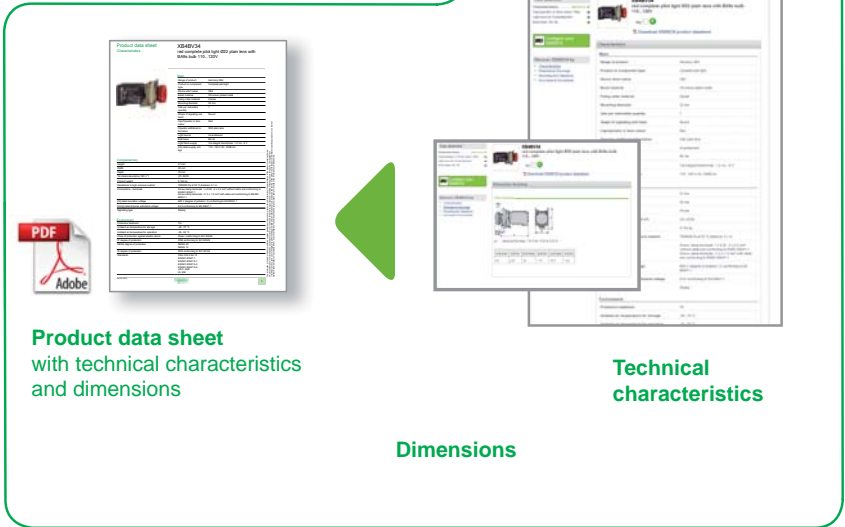


Path: www.schneider-electric.com > **Products and Services** > Automation and control > ... > Product offer



Graphic product configurator
Select the right product with just a few clicks

Dynamic product selector
View product characteristics and dimensions



Product data sheet
with technical characteristics
and dimensions

Technical characteristics

Dimensions

* Example of search on a product

Documents and downloads
View and download catalogues, technical publications, certificates, etc. from our website.

Product Information

- Product Configurator
- Product Selector
- Documents & Downloads
- Additional Links
- Support

Schneider website screenshot showing product details for 'Harmony XB4 - Ø 22 mm metal pushbuttons, switches, pilot lights'. The page includes a navigation menu, product images, and a 'Documents & Downloads' section with a table of available documents.

The essential guide Automation and Control 2013

Brochure cover for 'The essential guide Automation and Control 2013' featuring various automation components.

Control and signaling units Ø 22
Harmony® XB7 monolithic

Catalogue
January 2013

Catalogue cover for 'Control and signaling units Ø 22' showing different colored pushbuttons.



Dynamic catalogues

Essential guides

TYPE APPROVAL CERTIFICATE

Schneider Electric Industrie SAS

PDF icon

A Type Approval Certificate issued to Schneider Electric Industrie SAS for 'PUSH BUTTONS (Ø 22 mm)'. It includes technical specifications and a signature.



Certificates

ZB4BC / ZB4AC

Technical drawing showing exploded views of ZB4BC and ZB4AC components with dimensions and assembly instructions.

! DANGER / DANGER / PELIGRO

WARNING OF ELECTRIC SHOCK, EXPLOSION OR FIRE. EXPLOSION DANGER IN A FLAMMABLE ATMOSPHERE. EXPLOSION DANGER IN A FLAMMABLE ATMOSPHERE. EXPLOSION DANGER IN A FLAMMABLE ATMOSPHERE.

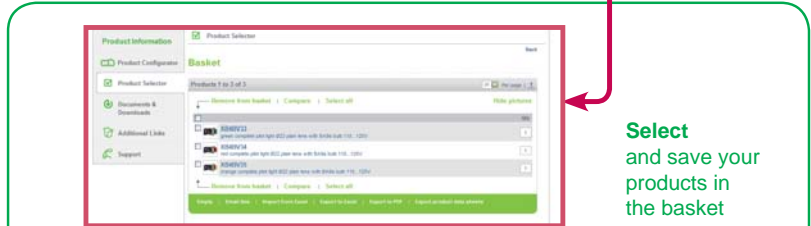
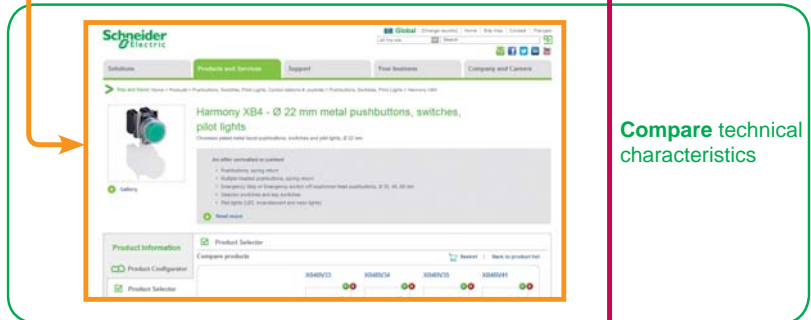
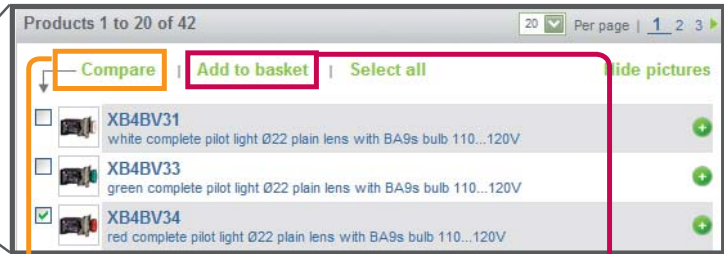
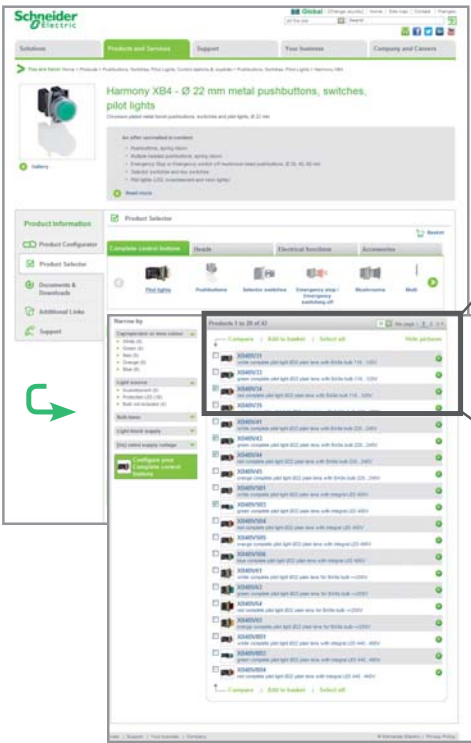
PDF icon

Technical publications

Compare, select, and compile



Path: www.schneider-electric.com > **Products and Services** > Automation and control > ... > Harmony XB4*

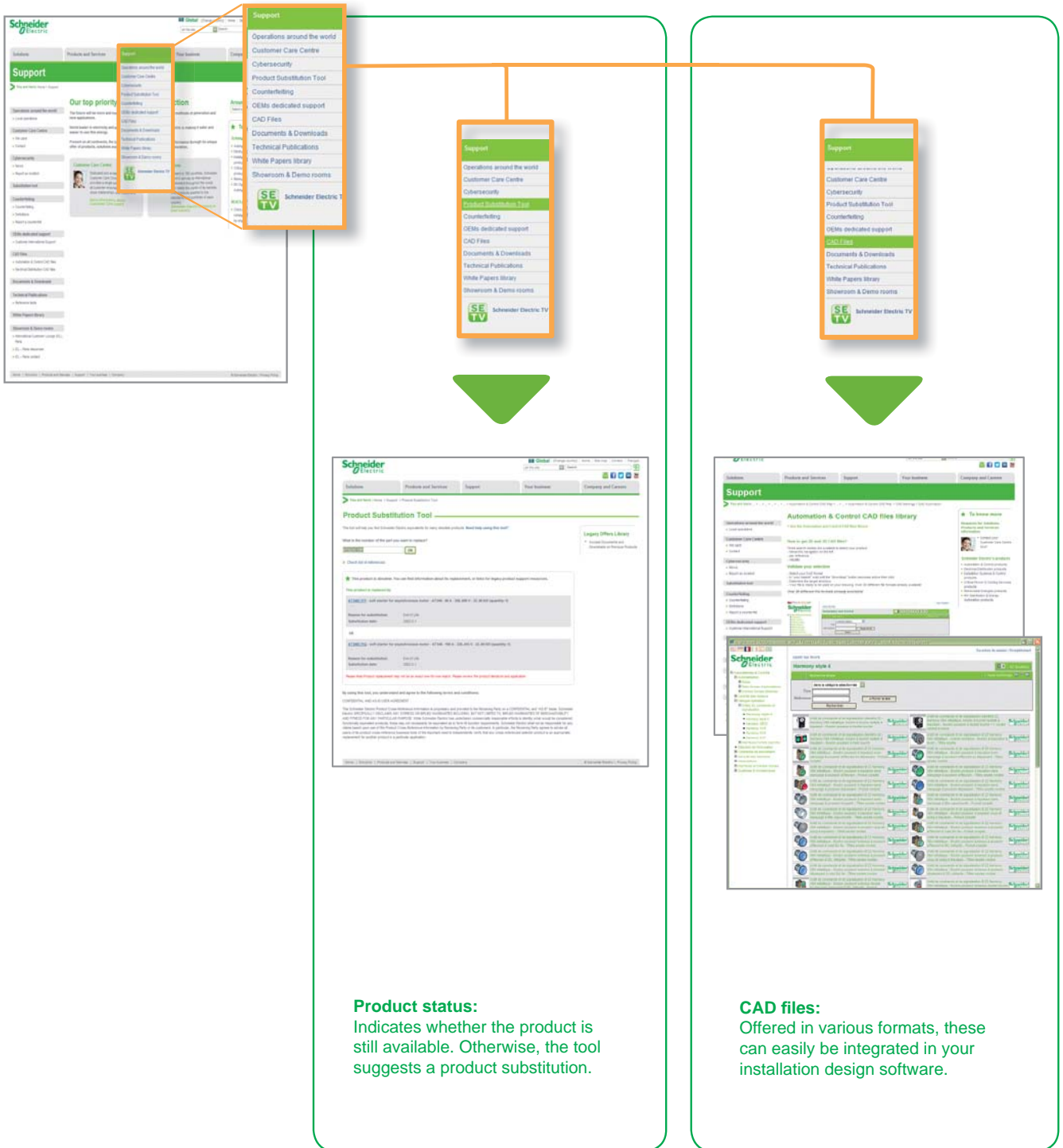


Check the product status, design your equipment



Path: www.schneider-electric.com > **Support** > Product Substitution Tool

Path: www.schneider-electric.com > **Support** > CAD files



Please note that references to products and services are just examples.

B							
	BMH1902P	25	ILA1●572P	29	VW3A3628	19	
BCH0401O●2●●●	17	BMH1903P	25	ILA1●572T	29	VW3M3301	19
BCH0601O●2●●●	17	BMI702P	31	ILA2●571P	29	VW3M3302	19
BCH0602O●2●●●	17	BMI702T	31	ILA2●571T	29	VW3M3401	19
BCH0801O●2●●●	17	BMI703P	31	ILA2●572P	29	VW3M3402	19
BCH0802O●2●●●	17	BMI703T	31	ILA2●572T	29	VW3M3403	19
BCH1001O●2●●●	17	BMI1002P	31	ILE1●661	29	VW3M3501	19
BCH1002O●2●●●	17	BMI1002T	31	ILE2●661	29	VW3M9101	30
BCH1301M●2●●●	17	BMI1003P	31	ILE2●662	29	VW3M9102	30
BCH1301N●2●●●	17	BMI07021●13	31	ILS1●571●	29	VW3M9103	30
BCH1302M●2●●●	17	BMI07031●67	31	ILS1●572●	29	VW3M9104	30
BCH1302N●2●●●	17	BMI10026●28	31	ILS1●573●	29	VW3M9105	30
BCH1303M●2●●●	17	BMI10039●37	31	ILS1●851●	29	VW3M9106	30
BCH1303N●2●●●	17	BSH0551P	25	ILS1●852●	29	VW3M9107	30
BCH1304N●2●●●	17	BSH0551T	21 23	ILS1●853P	29	VW3M9108	30
BCH1801N●2●●●	17	BSH0552P	25	ILS1●853T	29	VW3M9109	30
BCH1802M●2●●●	17	BSH0552T	21 23	ILS2●571●	29	VW3M9110	30
BCH1802N●2●●●	17	BSH0553P	25	ILS2●572●	29	VW3M9201	30
BCH1803M●2●●●	17	BSH0553T	21 23	ILS2●573●	29	VW3M9202	30
BCH1803N●2●●●	17	BSH0701P	25	ILS2●851●	29	VW3M9203	30
BCH1804M●2●●●	17	BSH0701T	21 23	ILS2●852●	29	VW3M9204	30
BCH1805M●2●●●	17	BSH0701T	21 23	ILS2●853P	29	VW3M9206	30
BMH0701P	25	BSH0702P	25	ILS2●853T	29	VW3M9207	30
BMH0701T	21 23	BSH0702P	25	L		VW3M9208	30
BMH0702P	25	BSH0702T	21 23	LXM23●U01M3X	17	VW3M9209	30
BMH0702T	21 23	BSH0703P	25	LXM23●U02M3X	17		
BMH0703P	25	BSH0703T	23	LXM23●U04M3X	17		
BMH0703T	21 23	BSH1001P	25	LXM23●U07M3X	17		
BMH1001P	25	BSH1001T	21 23	LXM23●U10M3X	17		
BMH1001T	21 23	BSH1002P	25	LXM23●U15M3X	17		
BMH1002P	25	BSH1002T	23	LXM23●U20M3X	17		
BMH1002T	21 23	BSH1003P	25	LXM23●U30M3X	17		
BMH1003P	25	BSH1004P	25	LXM23●U45M3X	17		
BMH1003T	23	BSH1401P	25	LXM23●U55M3X	17		
BMH1401P	23 25	BSH1402T	25	LXM23●U75M3X	17		
BMH1402P	25	BSH1403T	25	V		VW3A3601	19
BMH1403P	25	BSH1404P	25			VW3A3607	19
BMH1901P	25	I				VW3A3608	19
		ILA1●571P	29			VW3A3616	19
		ILA1●571T	29			VW3A3618	19

Schneider Electric Industries SAS

Head Office
35, rue Joseph Monier
F-92500 Rueil-Malmaison
France

www.schneider-electric.com

The information provided in this documentation contains general descriptions and/or technical characteristics of the performance of the products contained herein. This documentation is not intended as a substitute for and is not to be used for determining suitability or reliability of these products for specific user applications. It is the duty of any such user or integrator to perform the appropriate and complete risk analysis, evaluation and testing of the products with respect to the relevant specific application or use thereof. Neither Schneider Electric nor any of its affiliates or subsidiaries shall be responsible or liable for misuse of the information contained herein.

Design: Schneider Electric
Photos: Schneider Electric