
Connect to your UPS with the ABB ANC Network Card



The UPS ABB ANC Network Card provides full, secure connectivity for remote monitoring and management of your uninterruptible power supply

When your UPS is responsible for keeping a critical application running, it is essential that you have access to real-time UPS status data. Equally, UPS equipment is sometimes installed in remote or secure rooms, making access for personnel either inconvenient or undesirable. These two issues, and others, are resolved by the ABB ANC Network Card.

The UPS ABB ANC Network Card, based on ABB proprietary technology, provides remote monitoring and management capabilities for most of our UPSs (MegaFlex DPA IEC, DPA 500 IEC, DPA S4 IEC, DPA UPScale ST and RI, PowerWave 33 IEC, PowerLine DPA, TLE Series IEC, MegaFlex UL, SitePro UL, SG Series IEC and LP Series 33 UL).

With the network card, the user can monitor a UPS at any time and from anywhere. All UPS measurements are easily accessed remotely with a standard web browser via http. Services and functions available are: SNMP V2 and V3, SMTP, Modbus TCP/IP, Modbus RTU and remote syslog.

With hardware and firmware designed specifically to meet the very highest cyber security standards, the card guarantees the maximum robustness against cyber attacks.

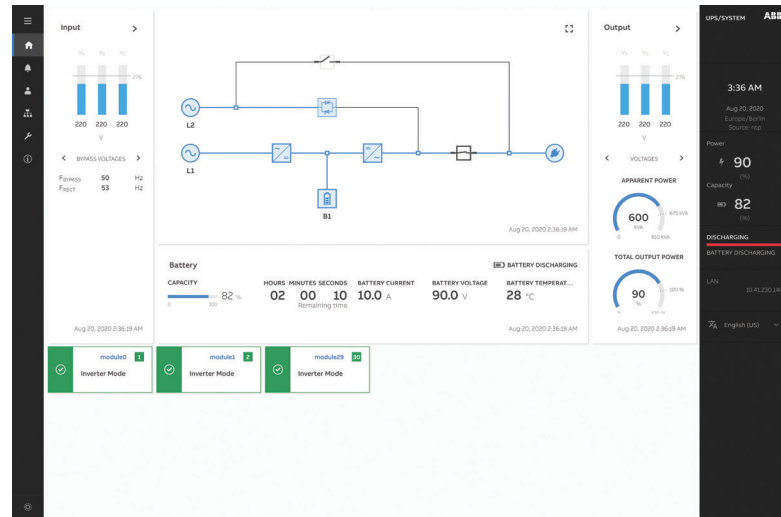
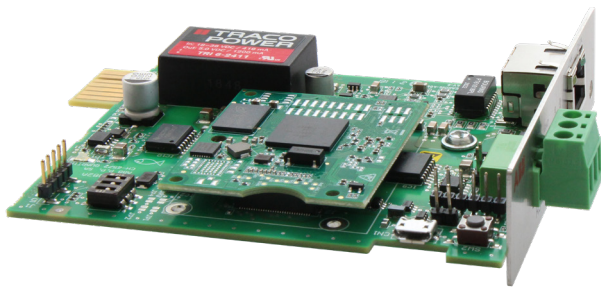
Clear and comprehensive user interface

The ABB ANC Network Card allows the remote UPS operator to observe measurements, graphs, trends, events and alarms onscreen, giving a comprehensive overview of operations. Displayed variables include:

- Input, output and battery voltage and currents
- Output kW, kVA
- Thermal monitoring of batteries (optional sensor needed)

For even greater flexibility, the system can be configured to send appropriate alerts via a secure SMTP mail server to key personnel.

Measurements and alarms are also made accessible to other integrated systems, including the electrical power monitoring system (EPMS), the building management system (BMS) and data center infrastructure management (DCIM). An integrated agent enables direct plug-and-play communication via ABB Ability™ SmartTracker, the remote monitoring and diagnostics platform for UPS systems.



01

01 ABB ANC Network Card
02 Example of critical component status dashboard

02

Key features

- Designed for cyber security: the network card's hardware meets the stringent ABB requirements for cyber security (TPM, secure boot, etc.) while the firmware has been tested using the latest robustness and security tests, which include port scanning, network flooding, vulnerability scanning and protocol fuzzing.
- Strong password management.
- Easy to configure through an intuitive wizard.
- Multi-language localization (English, French, Spanish, German and Italian).
- Individual module visualization up to 30 modules.
- Direct connection to ABB Ability™ SmartTracker

Because the Network card is an internal, proprietary ABB development, product updates are carried out in a timely and controlled manner, as are bug fixes and cyber security enhancements. Firmware revisions are performed via a highly secure procedure.

When real-time interaction with your UPS is a priority, the ABB ANC Network Card provides your cyber-secure gateway for remote monitoring and management.

ABB ANC Network Card Technical specifications

| | ABB ANC Network Card | ABB ANC-L Network Card |
|------------------------------|---|------------------------|
| Article number | | |
| In shipping package | 4NWP106923R0001 | 4NWP107801R0001 |
| Slot | 4NWP106924R0001 | 4NWP107802R0001 |
| Product compatibility | | |
| MegaFlex DPA IEC | x | |
| DPA 500 IEC | x | |
| DPA 250 S4 IEC | x | |
| DPA UPScale ST/RI | x | |
| PowerWave 33 IEC | x | |
| PowerLine DPA | x | |
| TLE Series IEC/UL | | x |
| MegaFlex UL | | x |
| SitePro UL | | x |
| SG Series IEC | | x |
| LP Series 33 UL | | x |
| Protocol support | HTTPS, SNMP/Trap v3, ModBus, Remote Syslog | |
| ModBus RTU | ModBus TCP/IP, RS485 | |
| UPS slot type | Standard slot | |
| Network support | Ethernet 10/100BaseT, full duplex - RJ45 connector - IPv4 | |
| Supported MIB | Rfc1628 + extended PEN for single module data | |
| Language | English, French, Spanish, German and Italian | |
| Operating temperature | max. 40°C (104°F) | |
| Operating humidity | 10 ÷ 80%, non-condensing | |
| Power input (nominal) | 12/24 Vdc | |
| Certification | CE, UL/NEMKO | |